

COMMODITIES

- Sells refined products inventory resulting from fractionation, blending activities, and positions from operational gains
- Participates in spot and forward wholesale markets



KEY CONTACTS

Jeff Selvidge
Senior Vice President
Commercial,
Refined Products
918.574.7403

Mark Roles
Vice President
Commercial, Marine, Southeast
Terminals, & Commodities
918.574.7716

MARINE & SOUTHEAST TERMINALS

Craig Yocham
Director
Commercial, Marine &
Southeast Terminals
918.574.7321

Nick Huff
Manager
Commercial, Southeast &
Northeast Terminals
918.574.7382

Kyle Krshka
Manager
Commercial, Gulf Coast Projects
918.574.7560

Don Pheonix
Manager
Traffic & Inventory, Galena Park &
Southeast Terminals
713.330.2725

Kelly Taylor
Manager
Commercial, Galena Park &
Marrero Terminals
918.574.7713

Mike Hutton
Supervisor
Commercial, Southeast Logistics
918.574.7428

Ryan Bowers
Project Manager
Commercial, Southeast Terminals
918.574.7471

Chad Compton
Project Manager
Commercial, Gulf Coast Projects
918.574.7258

Jon Foster
Project Manager
Commercial, Galena Park
918.574.7527

Billy Young
Project Manager
Commercial, Southeast &
Northeast Terminals
918.574.7776

COMMODITIES

Mark Lassman
Director
Commodities
918.574.7977

Alan Moyer
Manager
Commodities
918.574.7434

Shannon Kanneman
Supervisor
Commodities
918.574.7748

OVERVIEW

Magellan Midstream Partners, L.P. is a publicly traded partnership formed to own, operate, and acquire a diversified portfolio of energy assets. We are a key component of our nation's energy infrastructure and provide essential transportation, distribution and storage services for our nation. Magellan can tap into nearly 50% of the nation's refining capacity and store more than 95 million barrels of petroleum products such as gasoline, diesel fuel, and crude oil. We currently own the longest refined petroleum products pipeline system in the country. Our assets include over 80 petroleum products terminals, 9,500 miles of refined products pipelines, 1,700 miles of crude oil pipelines, and an 1,100 mile ammonia pipeline system.

Magellan continues to seek out potential organic growth opportunities in all areas of our business. These include incremental storage, new pipeline connections, expansion of our existing facilities and further advancement of our marine infrastructure capabilities in the Gulf Coast region. Magellan's team will ensure we not only meet your day to day throughput and storage needs, but that we also continue to grow and expand with you so that Magellan remains your preferred service provider.

ASSET MAP



GALENA PARK TERMINAL

- Located in Galena Park, TX on the Houston Ship Channel
- Storage Capacity — 14.5 million barrels
- Products — Gasolines, Diesel Fuels, Fuel Oils, Jet Fuel, Kerosenes, Condensate/Naphtha, Blendstocks, Crude Oil, Residual Fuel Oils, and Butane
- Access — 2 Ship Docks, 2 Barge Docks, 2 Railcar Racks, 1 Truck Rack
 - Rail loading and offloading services available
- Direct connections to multiple refinery origins along the Houston Ship Channel, and Texas City
- Supply access to the MPL South system, as well as Colonial and Explorer Pipelines from virtually any Gulf Coast Refinery
- Jet connections to Houston Hobby and Bush International Airports

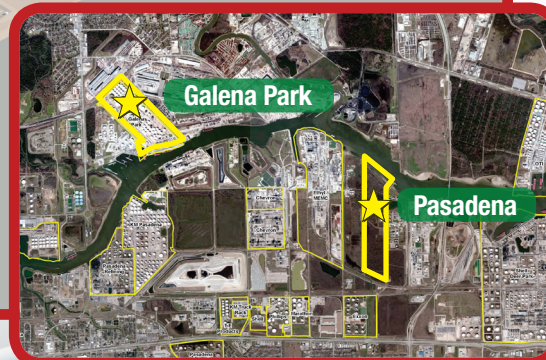
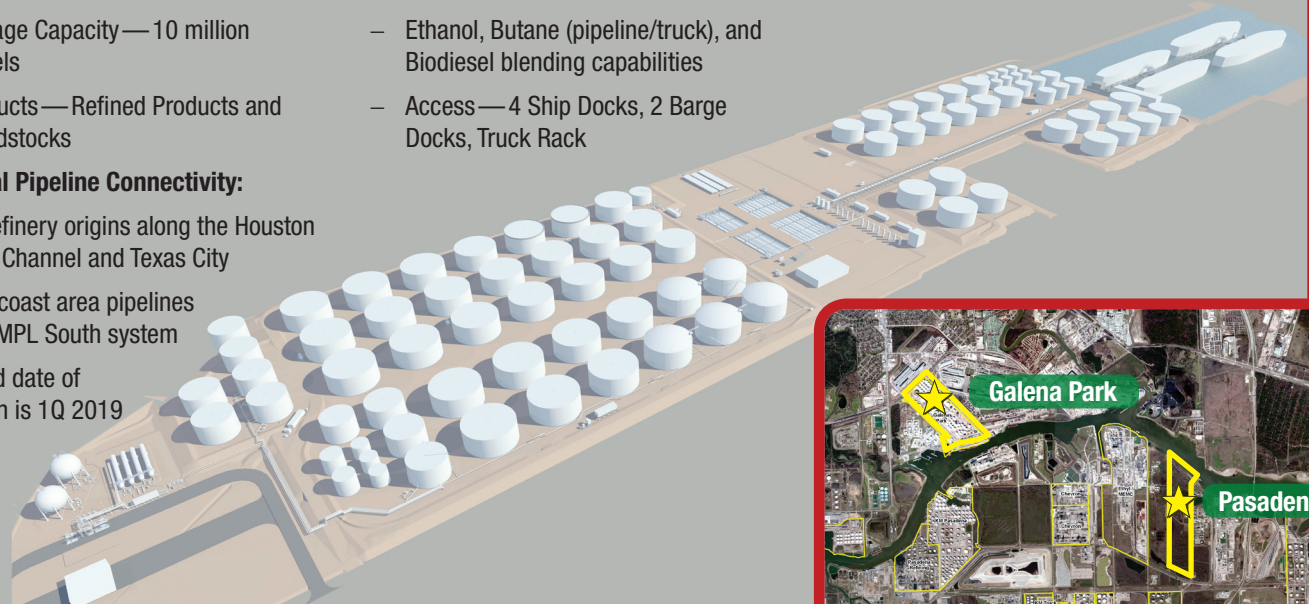


Magellan's new 3rd ship dock is expected to be fully operational 4Q 2018.



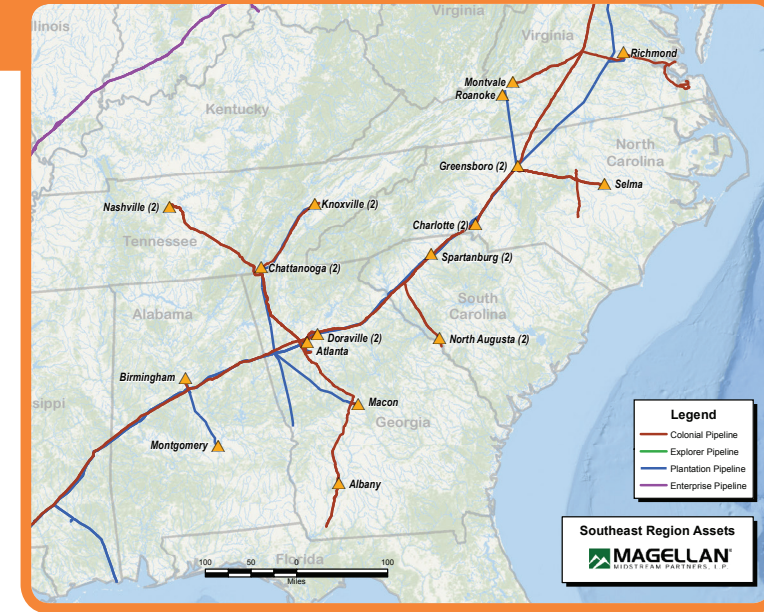
PASADENA TERMINAL

- Located 2.5 miles east of MMP Galena Park terminal on the Houston Ship Channel
- **Planned Assets:**
 - Storage Capacity — 10 million barrels
 - Products — Refined Products and Blendstocks
 - Ethanol, Butane (pipeline/truck), and Biodiesel blending capabilities
 - Access — 4 Ship Docks, 2 Barge Docks, Truck Rack
- **Potential Pipeline Connectivity:**
 - All refinery origins along the Houston Ship Channel and Texas City
 - Gulf coast area pipelines and MPL South system
- Expected date of operation is 1Q 2019



SOUTHEAST TERMINALS

- Comprised of 25 Terminals that supply 15 markets in the SE region
- Storage Capacity — 6 million barrels
- Magellan has 9 markets that are comprised of 2 terminals
 - Dual connectivity to Colonial and Plantation Pipelines in 8 markets
- Expansion projects currently underway in the Nashville and Charlotte markets
- Evaluating expansion opportunities throughout the Southeast including Macon, Selma, Atlanta, and North Augusta



MARRERO TERMINAL

- Located in Marrero, LA on the Mississippi River
- Storage Capacity — 3.1 million barrels
- Products — Residual Fuel Oils (#6, Pye Pitch, Slurry), Cutterstocks
- Access — 1 Ship Dock, 2 Barge Docks, 1 Manifest Rail Spur, and 2 Spot Truck Rack

NORTHEAST TERMINALS

NEW HAVEN TERMINAL:

- Located in New Haven, CT near the New York Harbor
- Storage Capacity — 4 million barrels
- Products — RFG, Premium RFG, Ethanol, ULSD, Kerosene, Heating Oil, Biodiesel, Asphalt
- Access — 2 Ship Docks, 3 Barge Docks, and 4 Truck Racks (9 Spot, 7 Spot, 6 Spot, 2 Spot Asphalt)
- Connectivity — Gulf Oil, Gateway, New Haven Terminal and Buckeye Origin
- Largest truck loading capacity in the New Haven market

WILMINGTON TERMINAL:

- Located in Wilmington, DE on the Delaware River
- Storage Capacity — 2.8 million barrels
- Products — RFG, Premium RFG, CBOB, Ethanol, ULSD, Crude Oil, and Residual Fuel Oils
- Access — 1 Ship Dock, 1 Barge Dock, and 8 Spot Truck Rack
- Pipeline connection to Delaware City refinery

